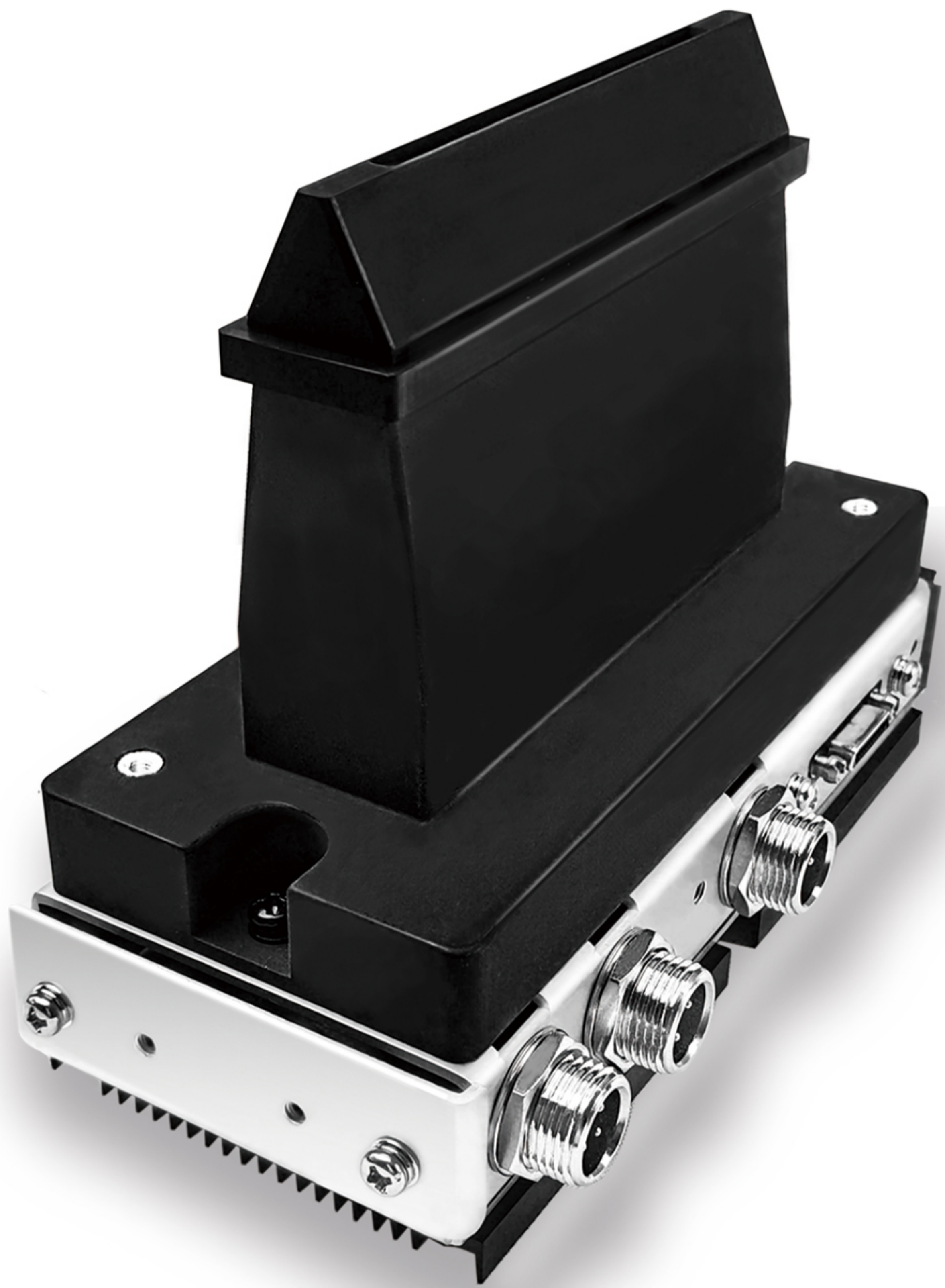


WHEC[®]

Provide Better Solution to Customer



WHEC HP



**Better solution for
detecting foreign objects**

New Product

LIS 2000dpi

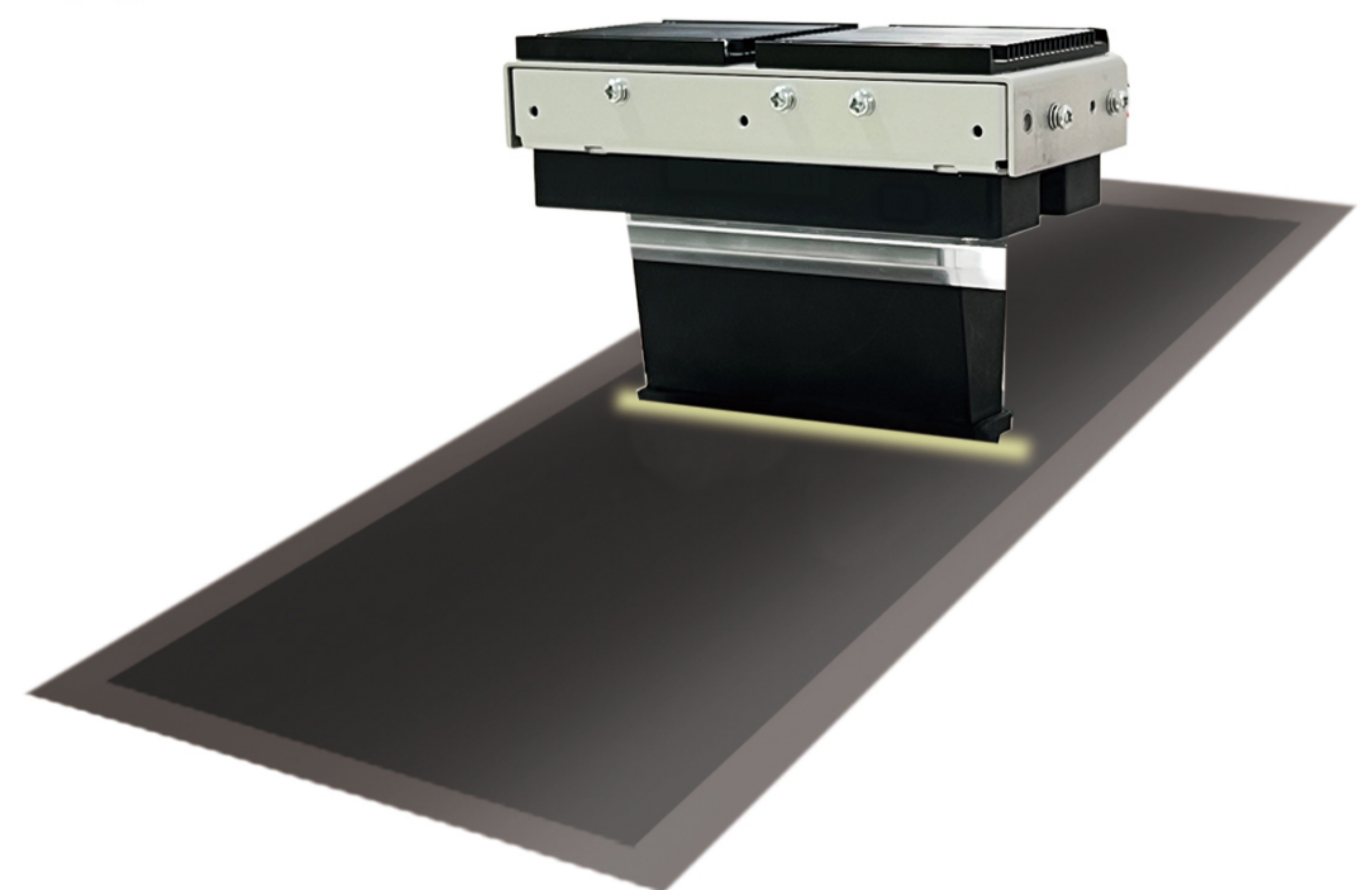
Line image sensor

Easy Installation

Space Saving

Customization

- High resolution and compact size with exclusive technology.
- No missing pixels allows scanning all lines.
- Apply to foreign objects, defects, concave-convex surface detection.
- Integrated sensor and lens structure for large format.
- Easy installation and maintenance.
- Compact size that allows installation in limited space.
- Scanning width and light source are customizable.



※ **We have scanning images of battery film, wafer, PCB and more.
Please contact us if you are interested.**

TEL:+86-631-5698128

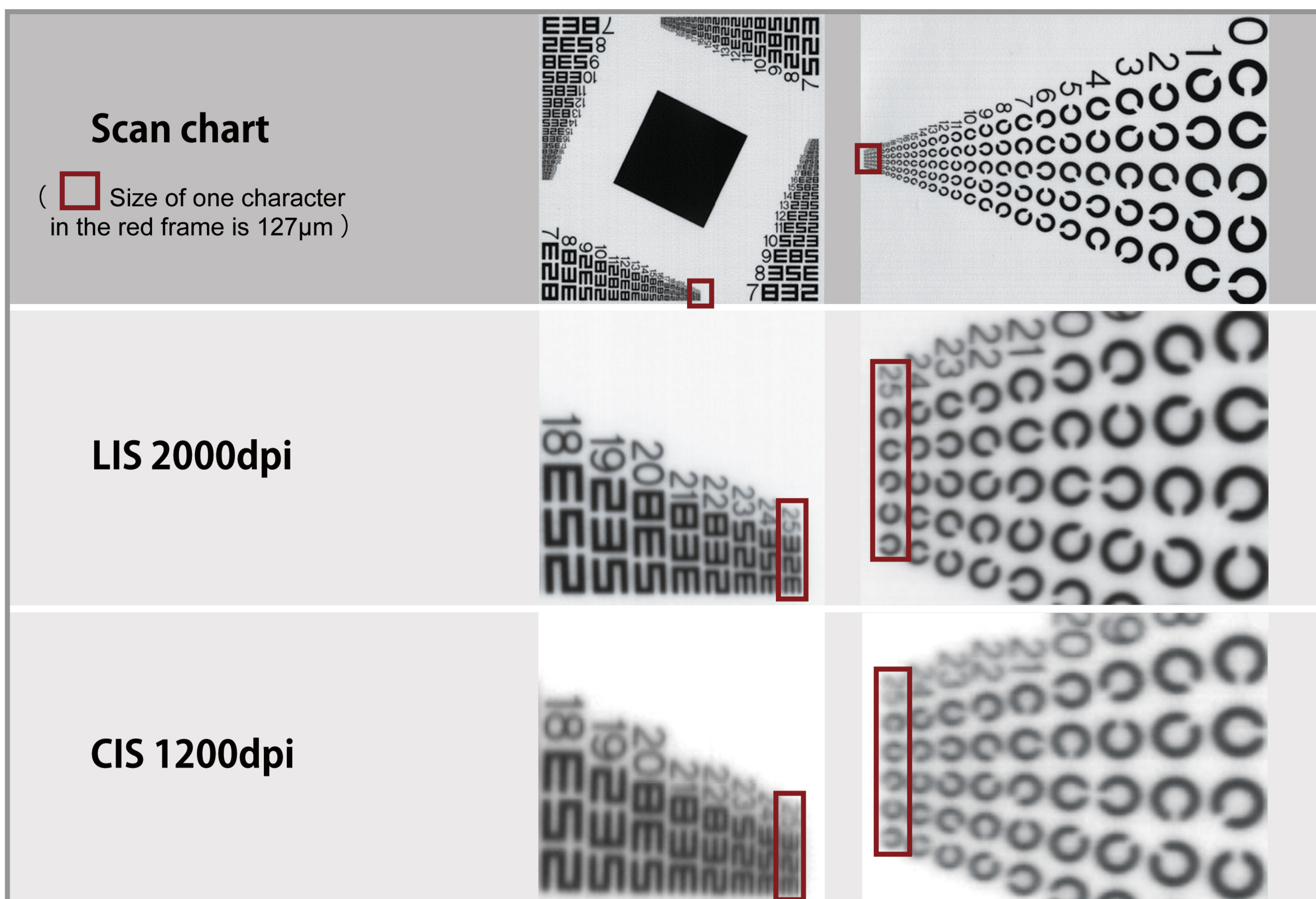
✉ Mail:info@w-hec.com

**📍 Weihai Hualing Opto-Electronics Co., Ltd. (WHEC)
NO.179, Keji Road, Hi-Tech.IDZ Weihai Shandong, China
www.w-hec.com**

Images Comparison

「2000dpi LIS vs 1200dpi CIS」

Edmond Reflective Scanner Target (ISO-16067-1)



Product Specification

Technical Parameter		Note
Scanning width	60mm、180mm	Other scanning width is available
Resolution	2000dpi	Higher resolution
Scanning speed(mono)	12.7m/min	
	16.0KHz	
External light source	white light source	Available
Working Distance	10.5mm	
Interface	Camera Link BASE	CoaXPress 2.0 is in developing
Dimension	140*72*105.9mm	
Weight	0.326Kg	

WHEC

Weihai Hualing Opto-Electronics Co., Ltd.

WHEC China R&D Centre
 NO.179, Keji Road, Hi-Tech.IDZ Weihai Shandong, China

WHEC Takarazuka R&D Centre
 Sakasegawa 1-11-35, Takarazuka-shi, Hyogo 665-0035, Japan

WHEC Shizuoka R&D Centre
 Tenmachi 9-1, Aoi-ku, Shizuoka-shi, Shizuoka 420-0858, Japan